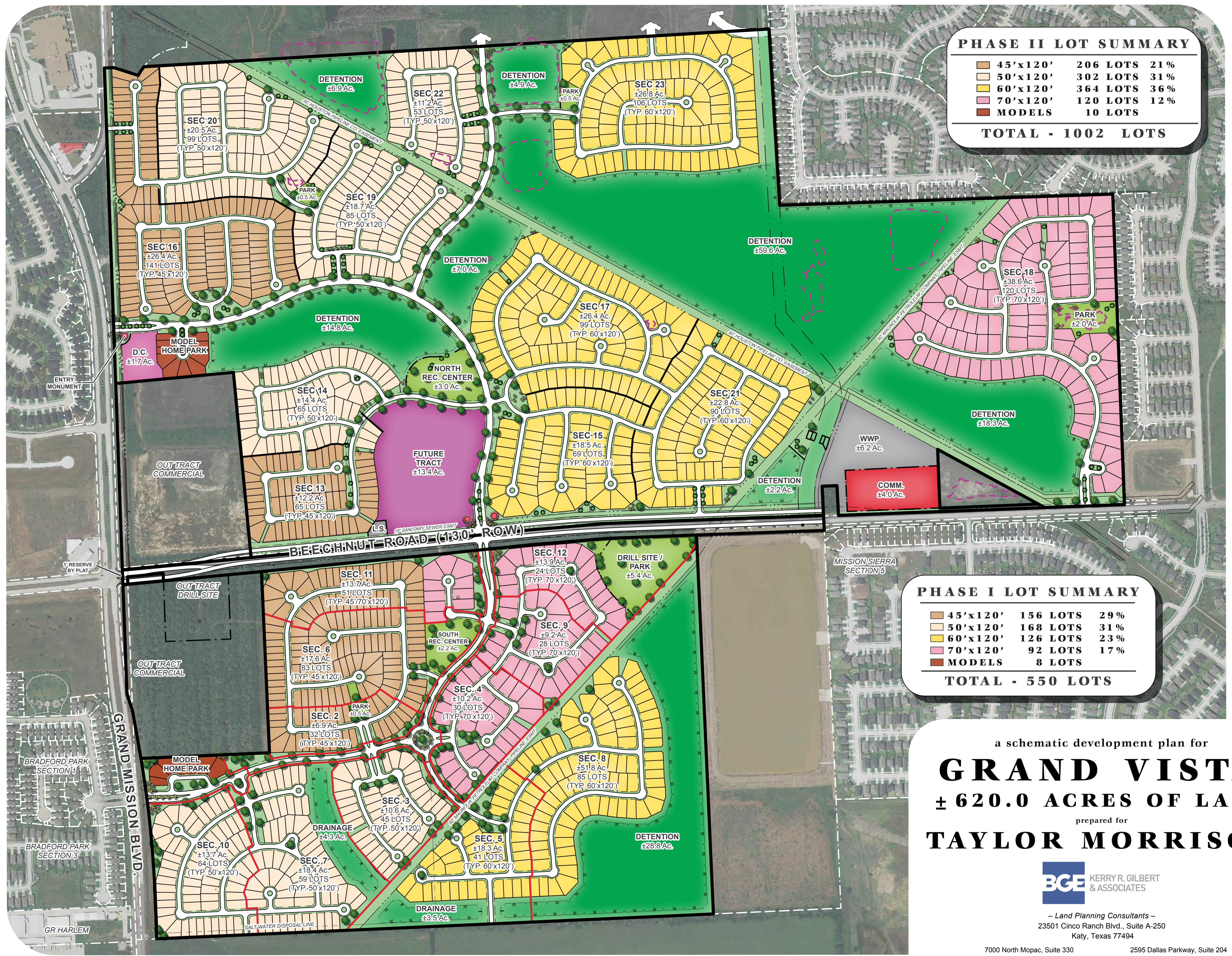


PHASE II LOT SUMMARY

45'x120'	206 LOTS	21%
50'x120'	302 LOTS	31%
60'x120'	364 LOTS	36%
70'x120'	120 LOTS	12%
MODELS	10 LOTS	
TOTAL - 1002 LOTS		

PHASE I LOT SUMMARY

45'x120'	156 LOTS	29%
50'x120'	168 LOTS	31%
60'x120'	126 LOTS	23%
70'x120'	92 LOTS	17%
MODELS	8 LOTS	
TOTAL - 550 LOTS		



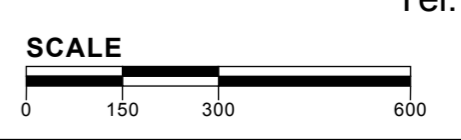
a schematic development plan for
GRAND VISTA
 ± 620.0 ACRES OF LAND
 prepared for
TAYLOR MORRISON



— Land Planning Consultants —
 23501 Cinco Ranch Blvd., Suite A-250
 Katy, Texas 77494

7000 North Mopac, Suite 330 Austin, TX 78731
 2595 Dallas Parkway, Suite 204 Frisco, TX 75034

Tel: 281-579-0340



FEBRUARY 10, 2015
 KGA #17001

THIS DRAWING IS A PICTORIAL REPRESENTATION FOR PRESENTATION PURPOSES ONLY AND IS SUBJECT TO CHANGE. FURTHER, SAID DRAWING IS A SCANNED IMAGE ONLY AND IS NOT FOR COMPUTATION OR CONSTRUCTION PURPOSES. THIS DRAWING MAY OR MAY NOT INCORPORATE INFORMATION AND/OR DATA PROVIDED TO BGE | KERRY R. GILBERT & ASSOCIATES BY OTHER CONSULTANTS RELATIVE TO ENGINEERING AND DRAINAGE, FLOOD PLANS AND ENVIRONMENTAL ISSUES AND SHOULD NOT BE RELIED UPON FOR ANY PURPOSE. NO WARRANTIES, EXPRESS OR IMPLIED, CONCERNING THE ACTUAL DESIGN, LOCATION, AND CHARACTER OF THE FACILITIES SHOWN ON THIS MAP ARE INTENDED. ADDITIONALLY, NO WARRANTY IS MADE TO THE ACCURACY OF THE INFORMATION CONTAINED HEREIN.